

THE CORNER STORE  
GALLERY

THIS PLACE: A GROUP EXHIBITION

Fleur Stevenson



# **This Place: A Group Exhibition**

Five female artists from across Australia respond to the landscape

November 18<sup>th</sup> – 28<sup>th</sup> 2020

Pre-sales launch online November 17<sup>th</sup> 8pm

Abstract artists Daniela Cristallo, Fleur Stevenson, Jackie Anderson, Liz Wickramasinghe and Madeline Young have each created a series of works that celebrate a specific place or landscape. While these artists all have very different styles, this exhibition will bring them all together in a beautiful abstract landscape exhibition.

## **Fleur Stevenson**

Fleur Stevenson is a New Zealand abstract emerging artist based in Sydney, whose work is inspired by the patterns, textures and shapes found amongst the landscape she visits.

In response to the theme: This Place, Fleur recently visited the Hawkesbury River and considers both her physical and immersive experience of painting in the landscape, along with what she sees around her.

Fleur hopes to depict the Hawkesbury using her own visual language to create compositions of movement, space, perspective and form, with textural elements.

**Fleur Stevenson**

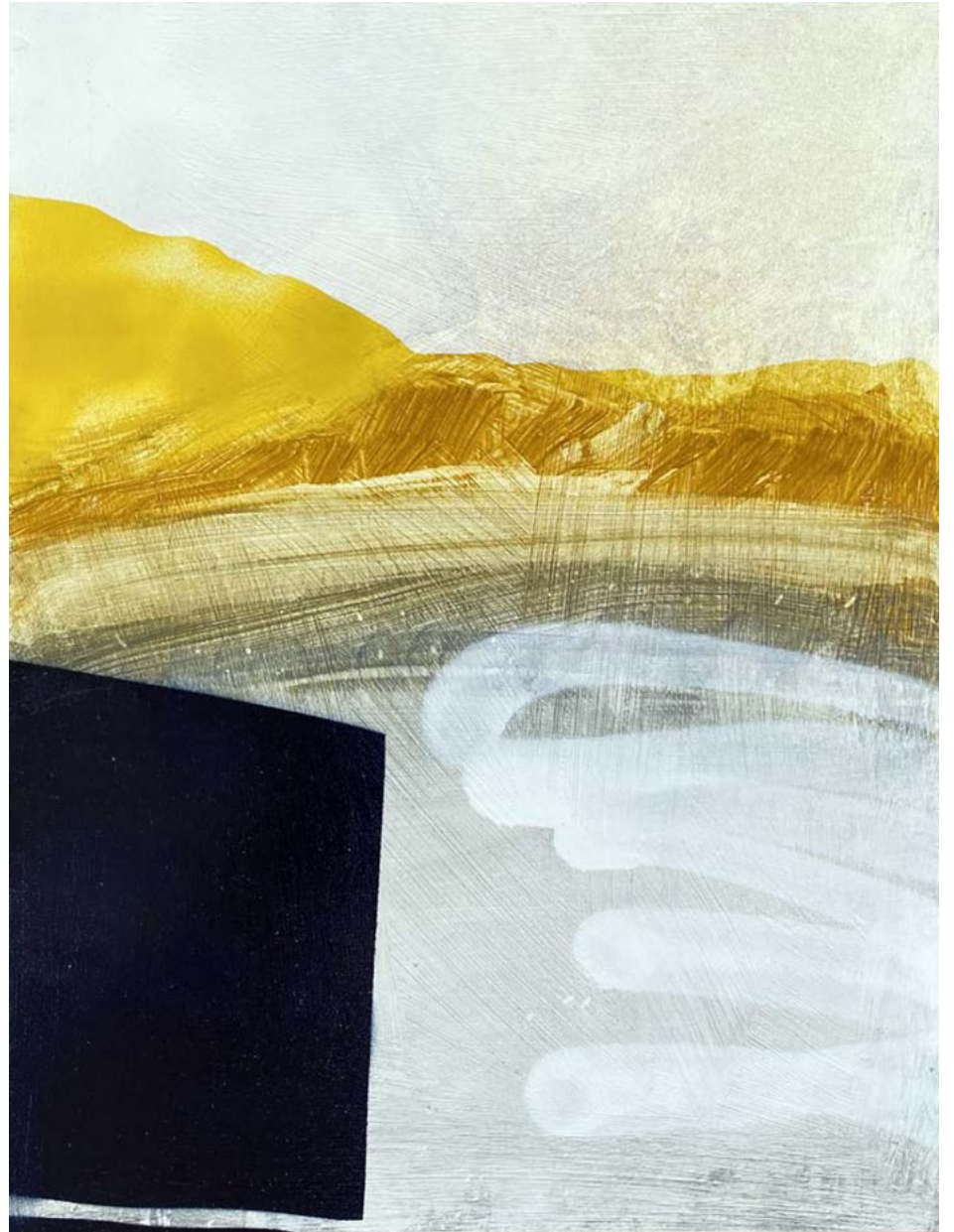
Hawkesbury and the Sundown, 2020

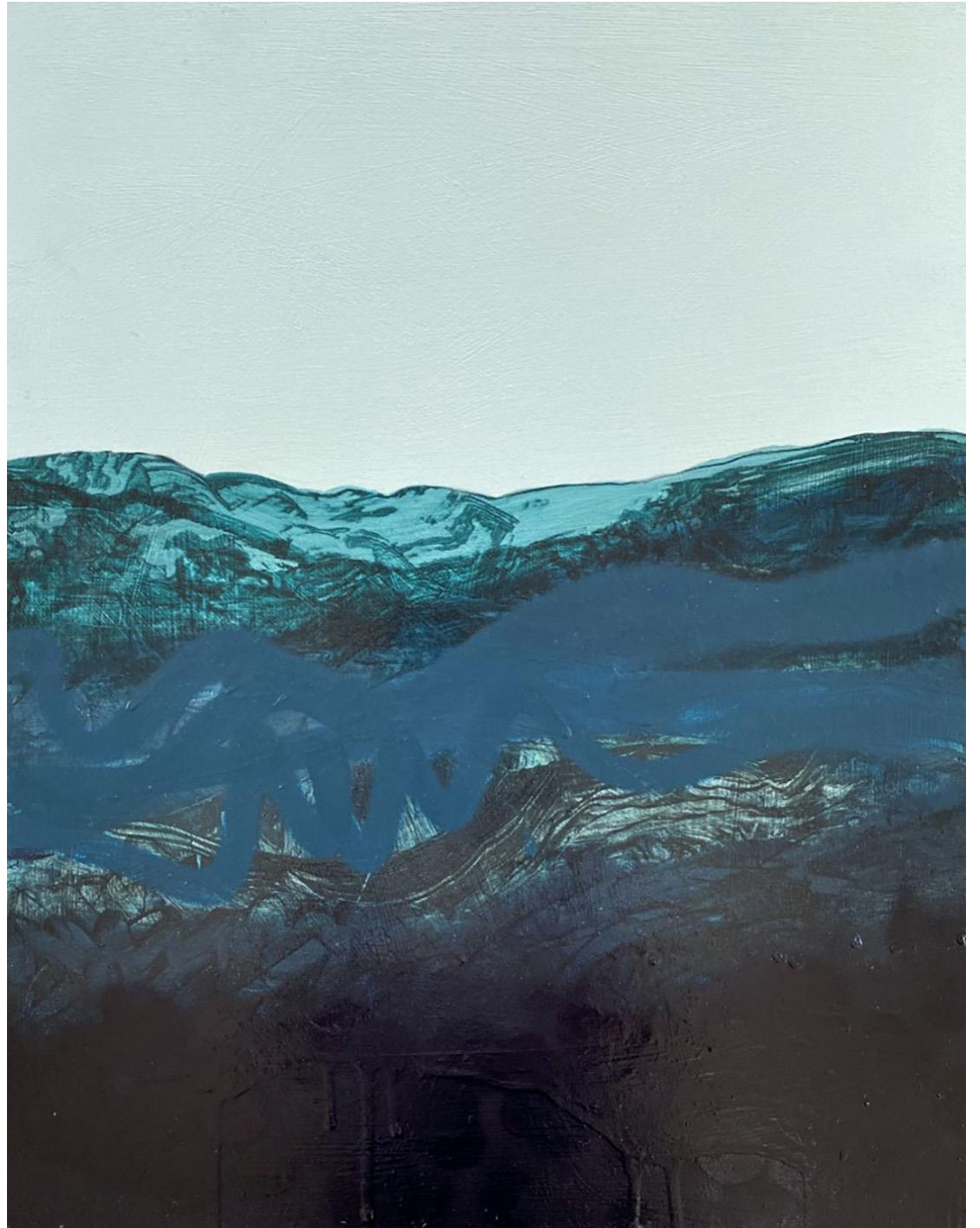
Acrylic and spray paint on board

39.5x30.5cm

Framed in Tasmanian oak

\$800





**Fleur Stevenson**

Hawkesbury No. 1, 2020

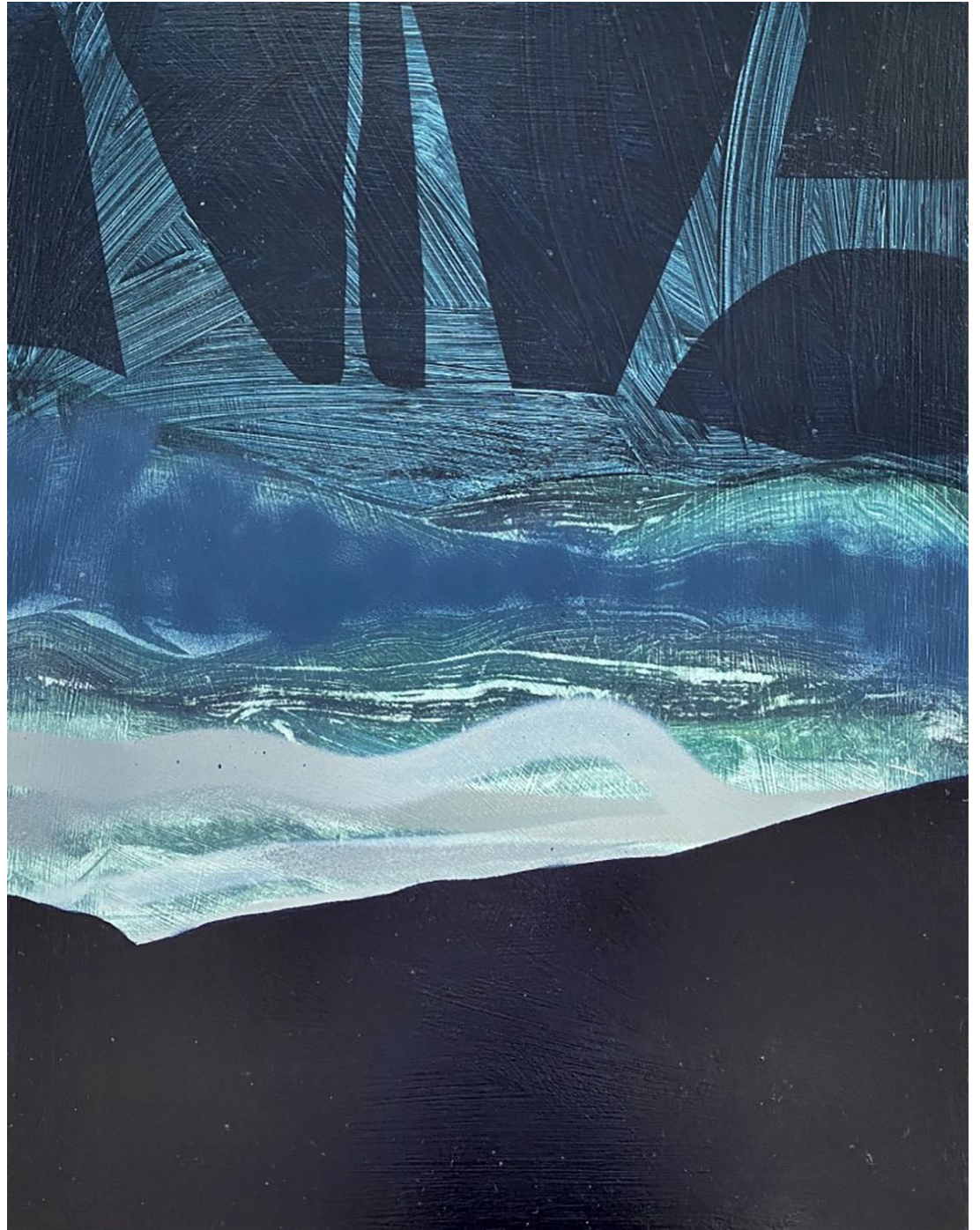
Acrylic and spray paint on board

53.5x43cm

Framed in Tasmanian oak

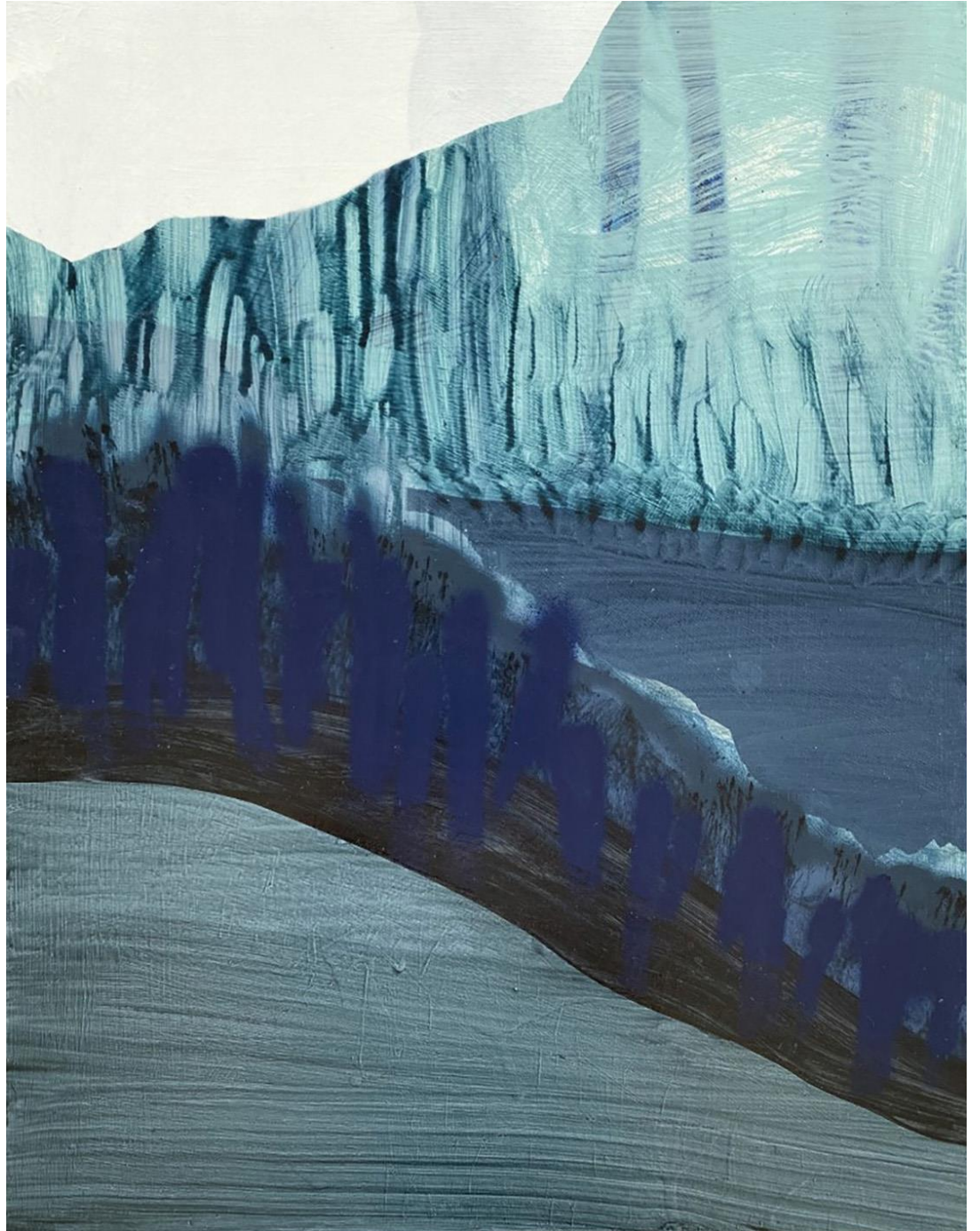
\$1100





**Fleur Stevenson**

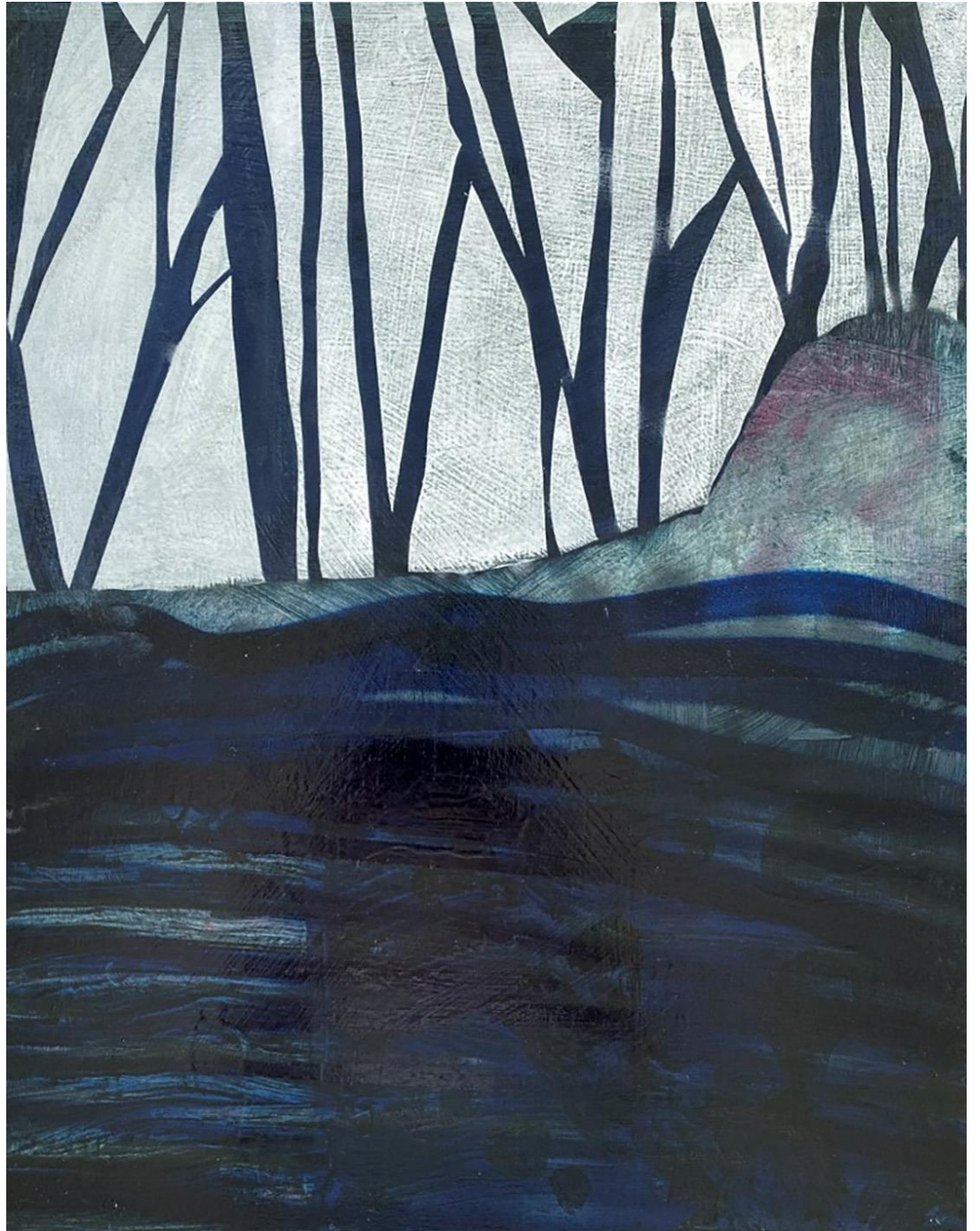
Hawkesbury No. 2, 2020  
Acrylic and spray paint on board  
53.5x43cm  
Framed in Tasmanian oak  
\$1100



**Fleur Stevenson**

Hawkesbury No. 3, 2020  
Acrylic and spray paint on board  
53.5x43cm  
Framed in Tasmanian oak  
\$1100





**Fleur Stevenson**

Hawkesbury No. 4, 2020

Acrylic and spray paint on board

53.5x43cm

Framed in Tasmanian oak

\$1100

**Fleur Stevenson**

Hawkesbury No. 5, 2020  
Acrylic and spray paint on board  
53.5x43cm  
Framed in Tasmanian oak  
\$1100







Matt Clark Photography

THE CORNER STORE  
GALLERY

**Fleur Stevenson has been one of our most popular artists here at The Corner Store Gallery since early 2019 when we first discovered her. We so excited that she agreed to be part of our new exhibition THIS PLACE. Fleur has created a special body of work just for us inspired by the Hawkesbury River.**

How did you become involved with The Corner Store Gallery?

*Since starting my practice late 2017, I worked away in my studio for all of 2018 and in 2019, I plucked up the courage to enter art prizes which is when I came across Madi and her beautiful gallery in Orange.*

*I was very humbled to be selected as a finalist in the 2019 Mini Series art prize and a group exhibition called LANDSCAPE, and three exhibitions in 2020: ABSTRACT, 8x10 and more recently HOME.*

Tell us about your practice? How long have you been making art? What is your favourite subject matter? Where do you create your art?

*I'm originally from New Zealand and most of my childhood was spent being loaded into the car by my parents and spending weekends travelling around the North Island.*

*This continued into my early adulthood, which set me up for a lifelong passion for the great outdoors and the need to explore and understand the cultural significance of a land.*

*Since beginning my practice in 2017, I've been working on developing my own visual language of abstracting landscapes I visit and my 'go-to' mediums are spray paint and acrylic. I work mostly en plein air and further develop ideas in my studio.*

Tell us about the body of work you've created for THIS PLACE. Why have you chosen this particular place?

*In response to the theme This Place, I recently visited the Hawkesbury River in NSW and considered both the physical and immersive experience of painting in the landscape, combined with painting what I can see around me.*

*I hope to depict the Hawkesbury using my own visual language to create compositions of movement, space, perspective and form, and textural elements.*





# THE CORNER STORE

---

# GALLERY

EXHIBITIONS | POPUPS | WORKSHOPS

The Corner Store Gallery was established in 2014 and has been providing artists and designers from all over Australia with a beautiful space to showcase their work and ideas for over 6 years.

We are a small, independently run space located in the thriving regional community of Orange in NSW. We exhibit a diverse range of emerging and well-established artists specialising in a great variety of mediums. We also hold workshops exploring a wide range of mediums and materials on a regular basis.

**382 Summer Street Orange NSW**

**[www.cornerstoregallery.com](http://www.cornerstoregallery.com)**

**[cornerstoregallery@outlook.com](mailto:cornerstoregallery@outlook.com)**

**0448 246 209**