



Raphe Coombes

Live, Love, Paint

Raphe Coombes - Live, Love, Paint

The Corner Store Gallery

382 Summer Street Orange NSW 2800 | www.cornerstoregallery.com

October 19 - October 29

Online Sales Launch 8pm October 18

For this body of work my focus is to bring out the fundamental highlights of life. Becoming a father and dialing into the journeys and adventures of our lives so far, with an ever evolving response to landscape, a celebration of it's diverse beauty.

Currently living in the small country town of Glen Innes NSW, I kept hearing whispers around the town of a place called Wyaliba, an old hippie commune in the Gibraltar Ranges National Park, NSW.

In the middle of winter, I decided to pack my van and see what the fuss was about. After a short 40 minute drive and 15 minute decent down a steep winding road through old growth forests, I arrived at the camp ground, surrounded by mountains, on the banks of the incredibly powerful Mann River. This is where I'd paint for the next few days. Once camp is set up I start walking the landscape, I spent hours listening to the bush music, watching the bird activity, collecting fungi, natural debris the river has consumed, comprehending the colors, walking the lookout tracks and talking to locals. They tell me 3 fires devastated the area in 2019, which explains the heavy rebirthing of the flora. I then sit and soak up the environment and wait.

The work this time immediately started to follow, like a kettle stuck at boiling point. With endless inspiration from the rawness and energy of the river and surroundings, the winter colors and frozen nights activating the fast development of the work.

Over the coming months I would return multiple times to explore with family, always drawing and painting on these trips, this place is special. I became extremely fixated on the Painter's Hour, the last hour before sun down where tones change. The river sparkling in deep violet hues, smoothly water-shaped ancient rocks popping with ecstatic color, burnt tree trunks creating the shadow passages, with the petricor smell often present in the night air.

Through my practice, it is important to keep my hands on the materials. From cutting the timber to size, building the supports and finally to finish framing the works, my love and respect of materials is my entry point into my creative process.

Watching my son Banjo, drawing and painting with him reminds me of the famous Picasso Quote 'It took me four years to paint like Raphael and a lifetime to paint like a child'. The freedom of marks, expression loose, untrained, pure and innate response to materials is absolutely beautiful. Kids make the best works and I aspire to re-invoke this freedom.

Landscape painting is to me, like being in a massive garden and responding to the energy and experience I find there. Reimagining the land to create my own visual world. This is a way to connect and engage with the landscape on a level that expands past my human self, something more, my higher self. I acknowledge the Traditional Owners of this land, the Gumbainggir people and deep gratitude for allowing my stay on country.

Raphe Coombes, Wytaliba, 2022
Oil and Graphite on board, 123x124cm, framed
\$4250



Raphe Coombes, Winter in Wytaliba, 2022
Oil and Graphite on board, 123x124cm, framed
\$4250



*Raphe Coombes, Sunrise Over The Banks Of
The Mann River, 2022*
Oil and Graphite on board, 123x124cm, framed
\$4250



*Raphe Coombes, Swing Landscape (Ode To
Stuart Davis), 2022*

Oil and Graphite on board, 123x124cm, framed
\$4250





Raphe Coombes, Afternoon in Wytaliba, 2022
Oil & Graphite on Board, 103.5x103.5cm, framed
\$2200





Raphe Coombes, Live, Love, Paint, 2022
Oil and Graphite on Board, 82x83.5cm, framed
\$1650



Raphe Coombes, Morning Walk Along The Mann River, 2022
Oil & Graphite on board, 82x83.5cm, framed
\$1650



Raphe Coombes, The Painters Hour, 2022
Oil and Graphite on board, 42.5x132.5cm, framed
\$1450



Raphe Coombes, Imagined Landscape, 2022
Oil and Graphite on board, 39.5x122.5cm framed
\$1450



Raphe Coombes, Cultural Awakening, 2022

Oil & Pencil on concertina paper, 21cmx 3m

\$550





Raphe Coombes, Cello Suite No1 in G Major, 2022
Oil & Graphite on board, 31.5x31cm, framed
\$450



Raphe Coombes, Night Painting, 2022
Oil and Graphite on board, 62x62cm, framed
\$820



Raphe Coombes, Banjo and the Beehive, 2022
Oil & Graphite on board, 44x44cm, framed
\$720



*Raphe Coombes, Picnic With Banjo & The
Butcher Birds, 2022*
Oil & Graphite on board, 44.5x44.5cm, framed
\$720





Raphe Coombes, Raspberry Lookout, 2022
Oil & Graphite on board, 21.5x62cm, framed
\$550



Raphe Coombes, The Painters Hour II, 2022
Oil & Graphite on board, 21.5x62cm, framed
\$550



Raphe Coombes, The Painters Hour III, 2022
Oil & Graphite on board, 21.5x62cm, framed
\$550



Raphe Coombes, Banjo At Raspberry Lookout, 2022
Oil, Graphite & Resin on board, 42x42cm, framed
\$850

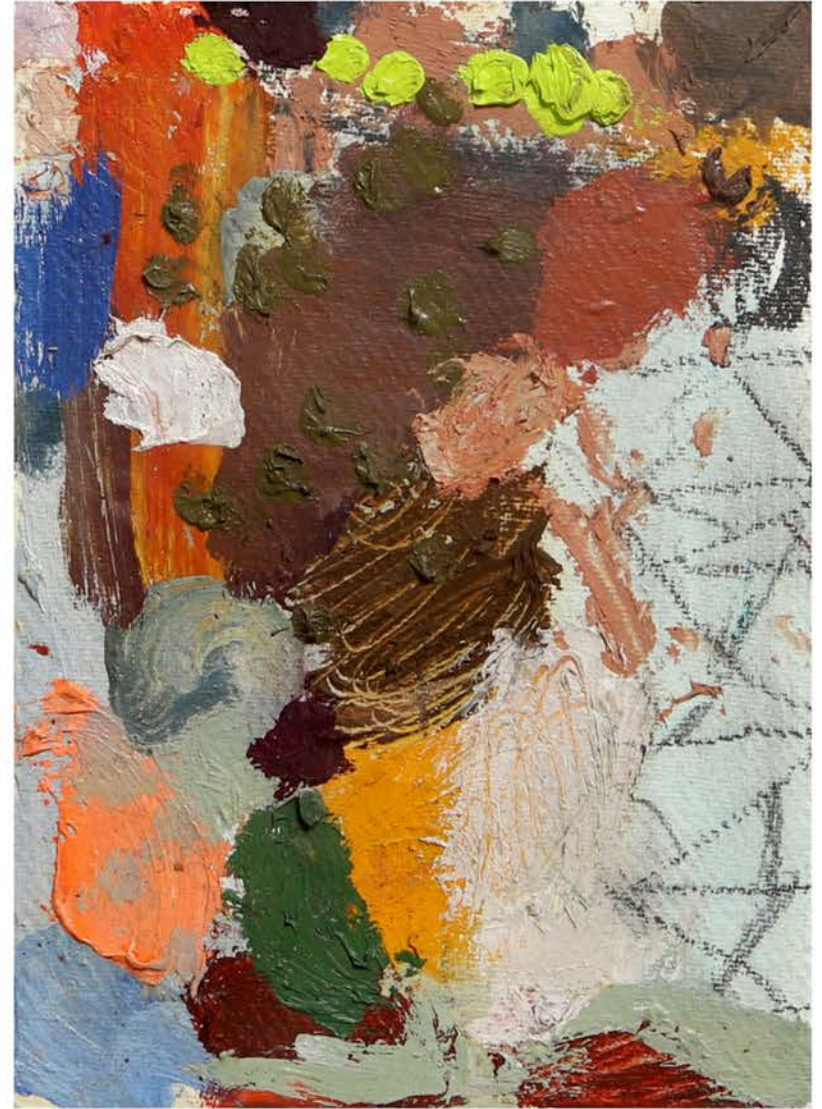


Raphe Coombes, Banjo at Boundary Falls, Winter, 2022
Oil, graphite and resin on board, 42x42cm, framed
\$850



Raphe Coombes, Field Study 1, 2022

Oil & Graphite on Cotton Rag paper, 37x29cm, framed
\$320



Raphe Coombes, Field Study 2, 2022

Oil & Graphite on Cotton Rag paper, 37x29cm, framed
\$320



Raphe Coombes, Field Study 3, 2022

Oil & Graphite on Cotton Rag paper, 37x29cm, framed
\$320



Raphe Coombes, Field Study 4, 2022

Oil & Graphite on Cotton Rag paper, 37x29cm, framed
\$320



Raphe Coombes, Field Study 5, 2022
Oil and Graphite on Cotton Rag
paper, 37x29cm, framed
\$320



Raphe Coombes, Field Study 6, 2022
Oil and Graphite on Cotton Rag paper,
37x29cm, framed
\$320



Raphe Coombes, Field Study 7, 2022
Oil and Graphite on Cotton Rag paper,
37x29cm, framed
\$320

Raphe Coombes
The Corner Store Gallery

382 Summer Street Orange NSW 2800

www.cornerstoregallery.com

