

TIM WINTERS - RIDGEWAY  
The Corner Store Gallery



# Tim Winters – Ridgeway

The Corner Store Gallery

382 Summer Street Orange NSW 2800 | [www.cornerstoregallery.com](http://www.cornerstoregallery.com)

**May 19th – 29th 2021**

Opening Night May 19th 6pm

Online Sales Launch 8pm May 18th

.....

walking the white lines

dots of earthbound

mounds

stones

memories

island to island

anchored

in the past

each with its own

story

.....

The Ridgeway is one of the ancient roads criss-crossing Britain,  
connecting places of significant spiritual importance.

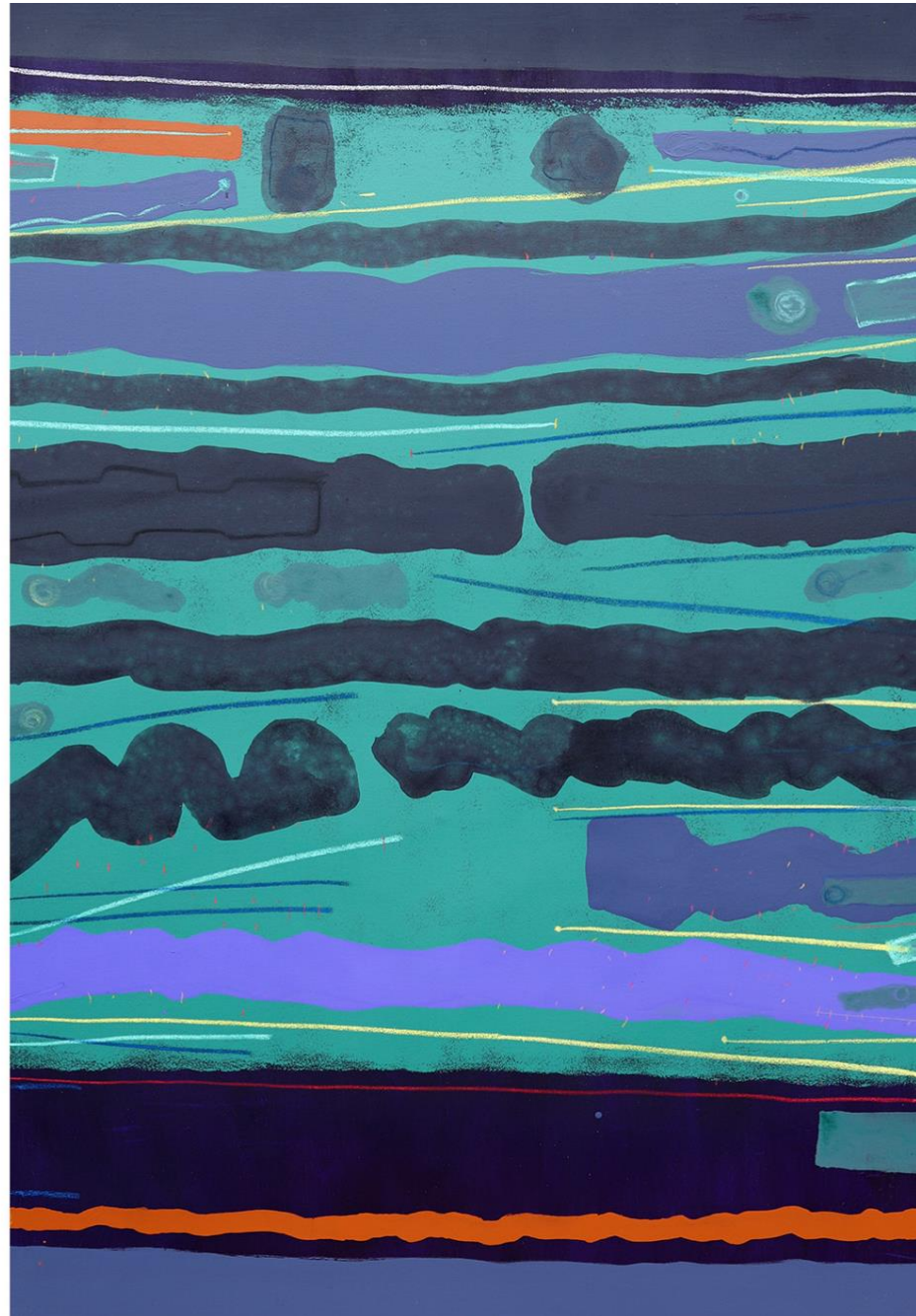
The exhibition explores the nature of memory and place...



*Walking the White Lines*

Mixed media on canvas, 170x120cm

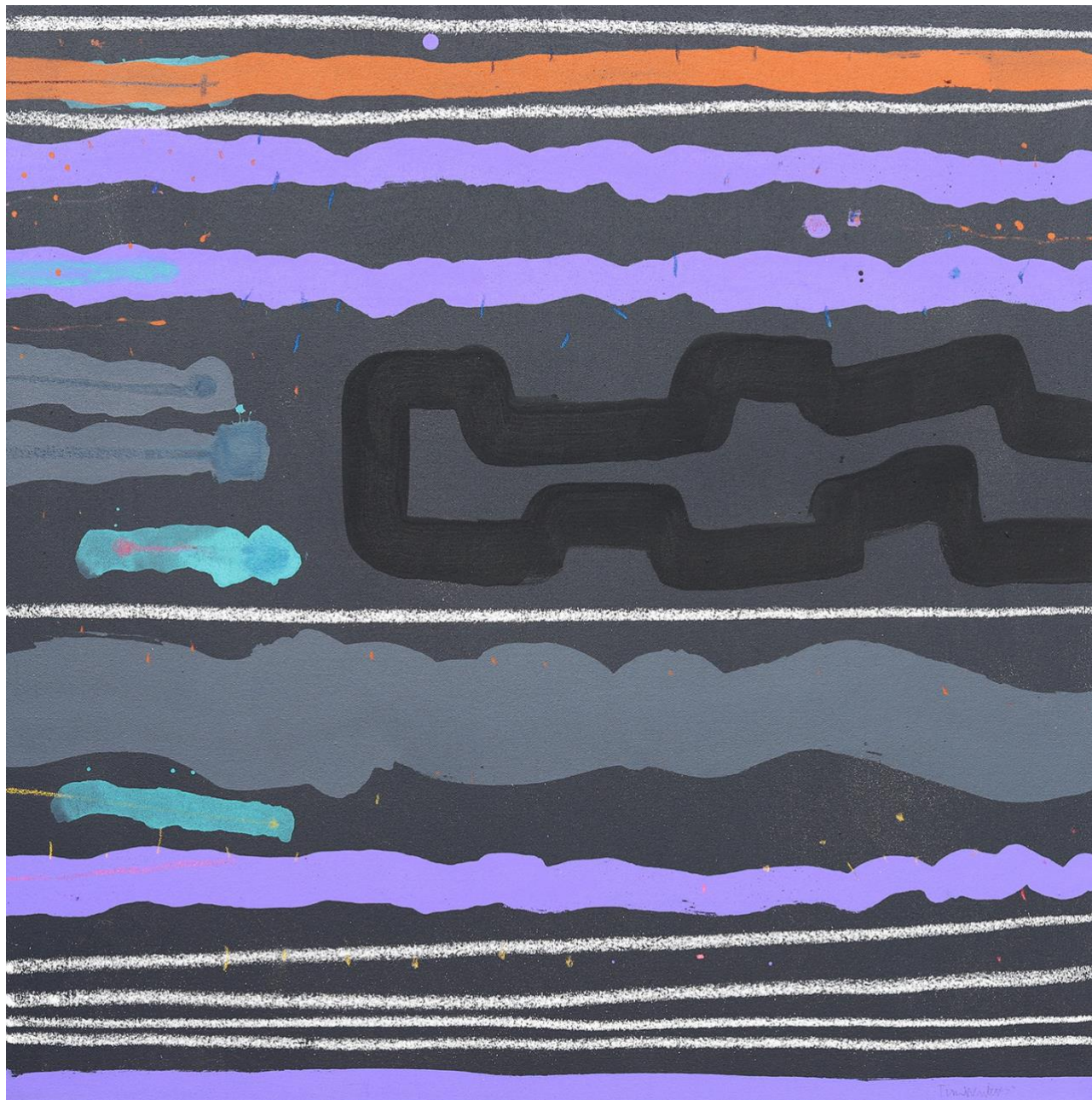
\$8750



*Weyland's Smithy: Walking the White Lines i*

Mixed media on canvas, 60x60cm

\$2850





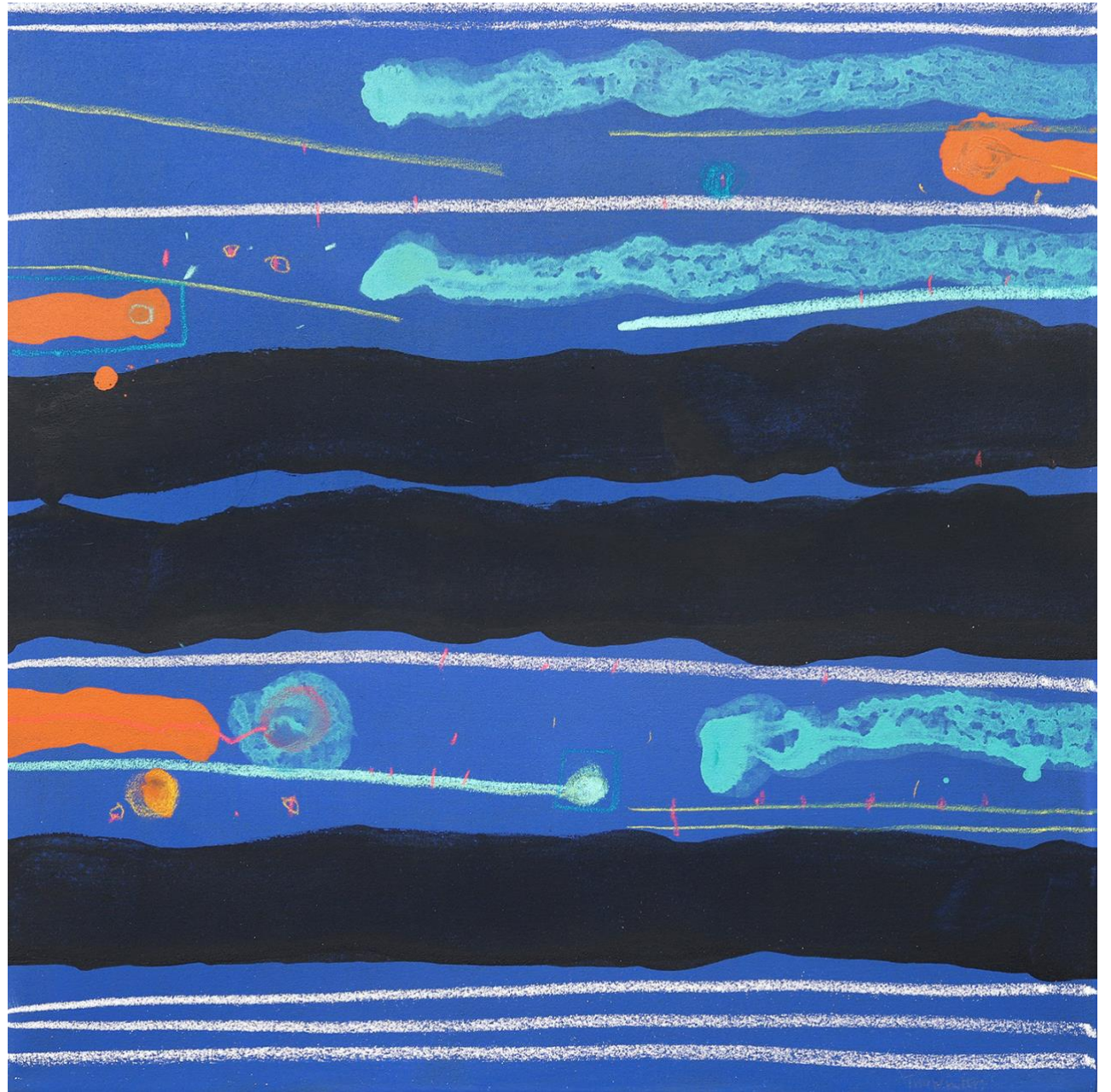


*Weyland's Smithy: Walking the White Lines ii*

Mixed media on canvas, 60x60cm

\$2850





*Weyland's Smithy: Walking the White Lines iii*

Mixed media on canvas, 60x60cm

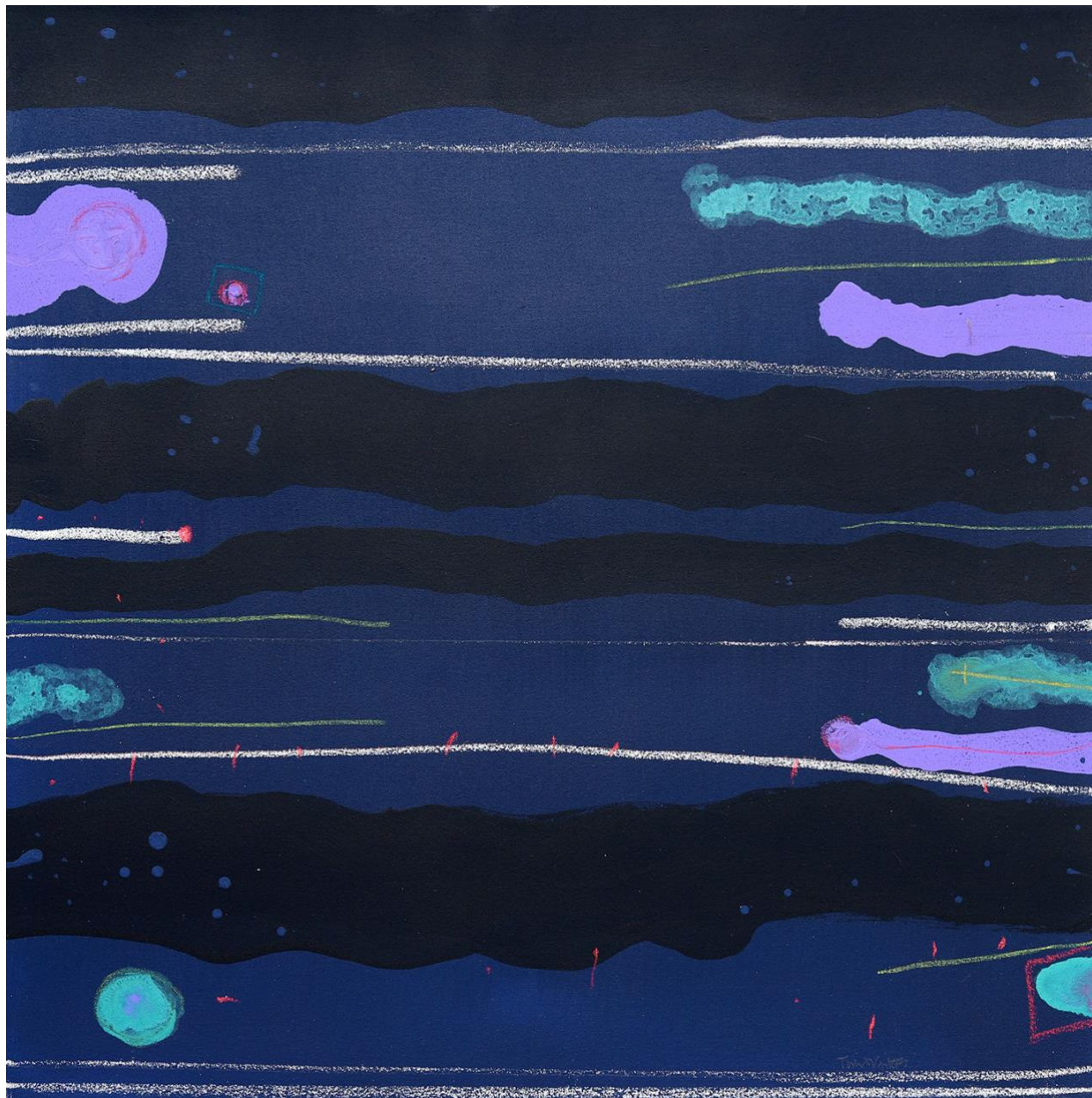
\$2850



*Weyland's Smithy: Walking the White Lines iv*

Mixed media on canvas, 60x60cm

\$2850



*White Horse i*

Mixed media on canvas, 60x60cm

\$2850





*White Horse ii*

Mixed media on canvas, 60x60cm

\$2850





*LeyLines i*

Mixed media on canvas, 30x30cm

\$1250



*LeyLines ii*

Mixed media on canvas, 30x30cm

\$1250





*Weyland's Smithy i*

Mixed media on canvas, 60x30cm

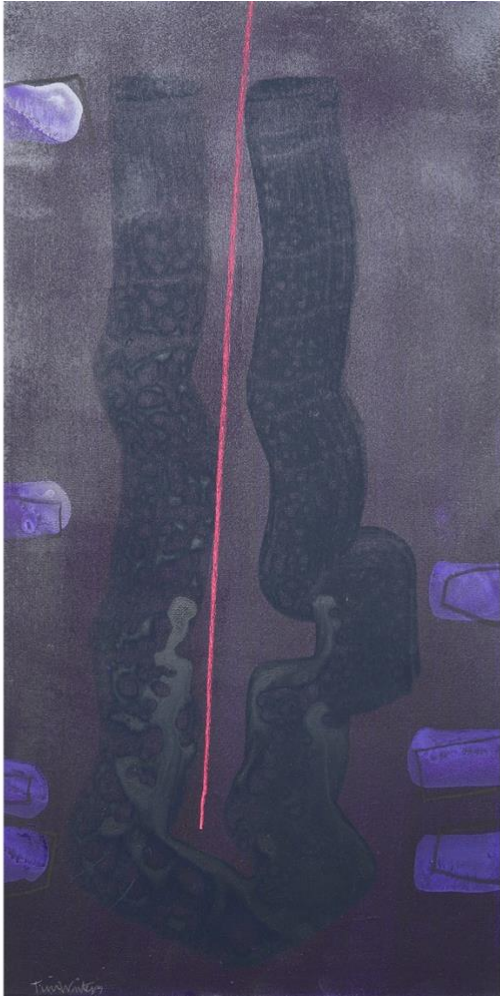
\$1950



*Weyland's Smithy ii*

Mixed media on canvas, 60x30cm

\$1950



*Weyland's Smithy iii*

Mixed media on canvas, 60x30cm

\$1950



*Weyland's Smithy iv*

Mixed media on canvas, 60x30cm

\$1950





*Weyland's Smithy v*

Mixed media on canvas, 30x60cm

\$1950



*Weyland's Smithy vi*

Mixed media on canvas, 30x60cm

\$1950

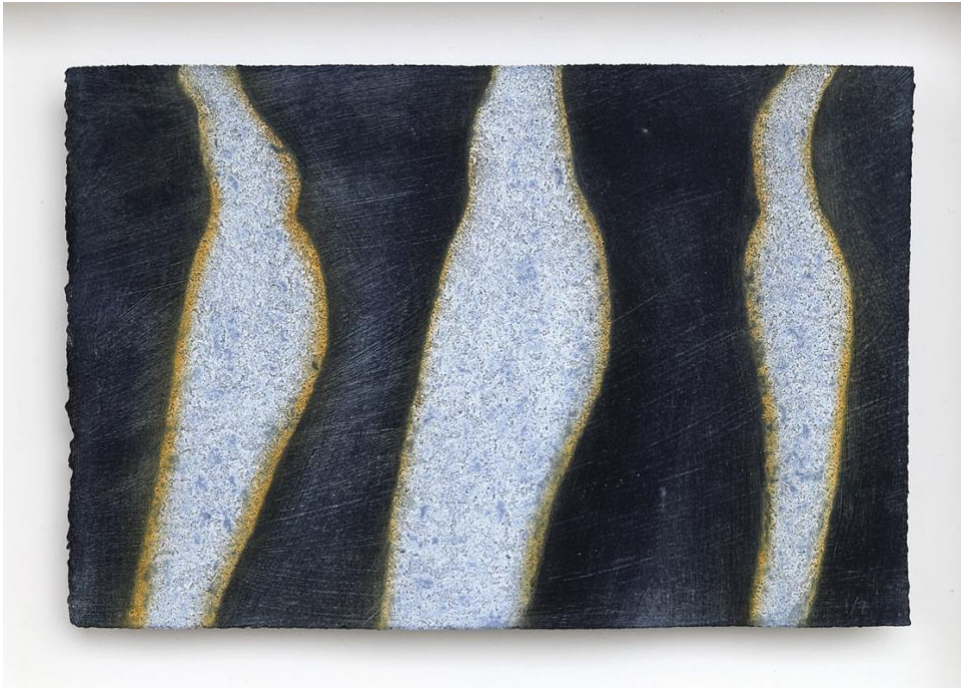


*Two Standing Stones*

Collagraph, edition of 7: 1/7 framed, 42x84cm \$550

2-7 unframed, 29x76cm \$295





*Stone Print i*

Collagraph, edition of 7: 1/7 framed, 31x41cm \$295

2-7 unframed, 19x29cm \$195



*Stone Print ii*

Collagraph, edition of 7: 1/7 framed, 31x41cm \$295

2-7 unframed, 19x29cm \$195



Tim Winters in his Stuart Town Studio, photographs by Madeline Young