



**Ana Anderson**

Exhale

# Ana Anderson - Exhale

**The Corner Store Gallery**

382 Summer Street Orange NSW 2800 | [www.cornerstoregallery.com](http://www.cornerstoregallery.com)

**September 28 - October 8**

**Online Sales Launch 8pm September 27th**

Ana Anderson is a contemporary Australian artist, she holds a Bachelor of Fine Arts (2007) Honours from the National Art School. Ana's work focuses on the Australian landscape and our connection to nature, exploring the line between reality and abstraction.

In this body of work Ana represents the places of solace that she often retreats to, they are the quiet spaces where she finds connection to something larger, where she can escape and just breathe, they are the spaces between the trees. These compositions were created with multiple layers, tuning into the works in a push and pull intuitive process, creating a balance between reality and abstraction.

Ana has been a finalist in several Australian art awards including the Dobell Prize for Drawing, the Adelaide Perry Drawing Prize, the Churchie National Emerging Art Prize, Mosman Art Prize, Metro 5 Art Award and a semi-finalist in the Doug Moran National Portrait Prize. Ana was awarded the Storrier Onslow NAS Paris Residency as well as the Hill End Artist Residency. Ana was the recipient of the Mini Series Art Prize, culminating in a solo exhibition at the Corner Store Gallery in September (2022).



*Ana Anderson, Across The Water To Echo Point, 2022*

Acrylic on board, 63.5x25.5cm, framed in Oak

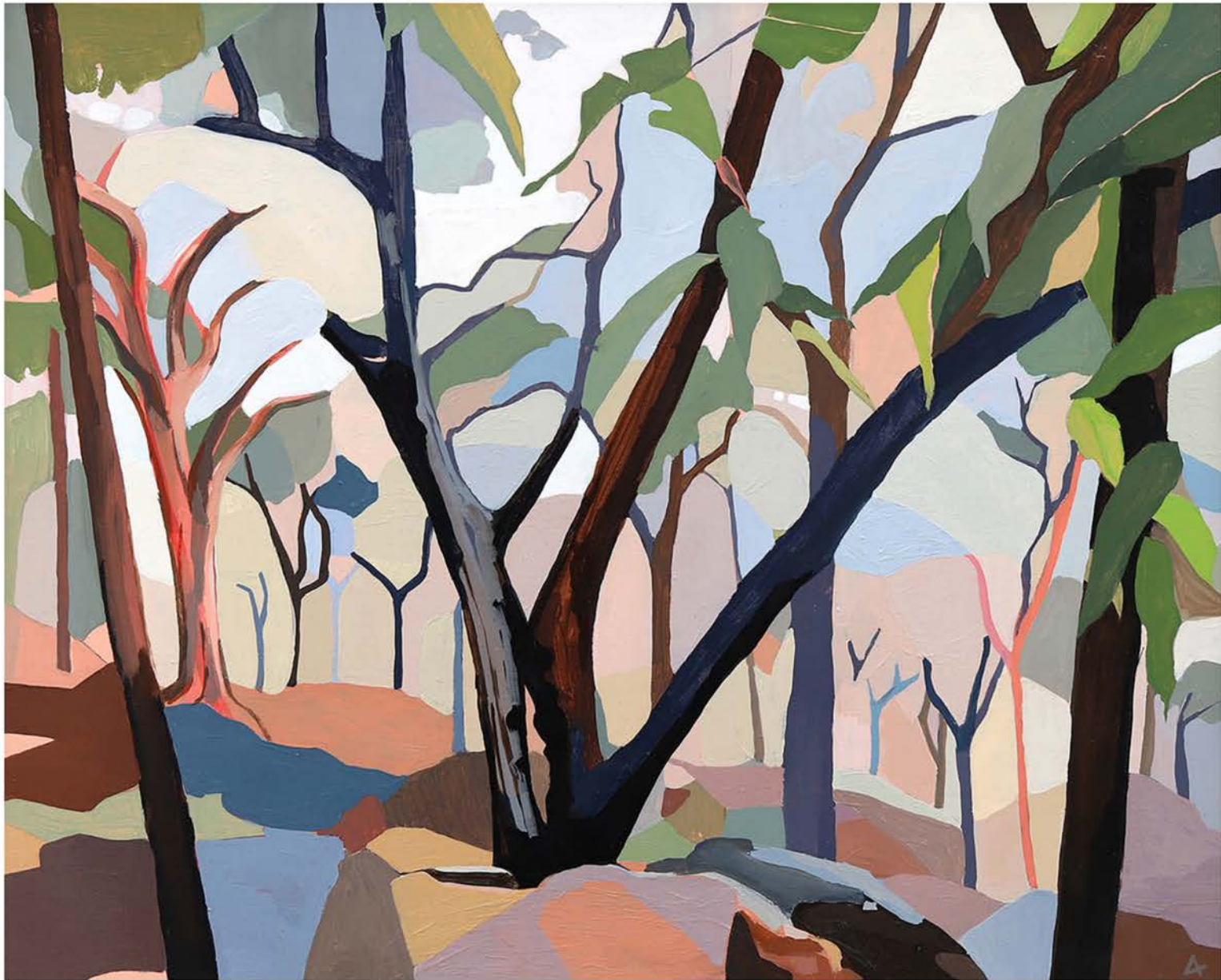
\$790



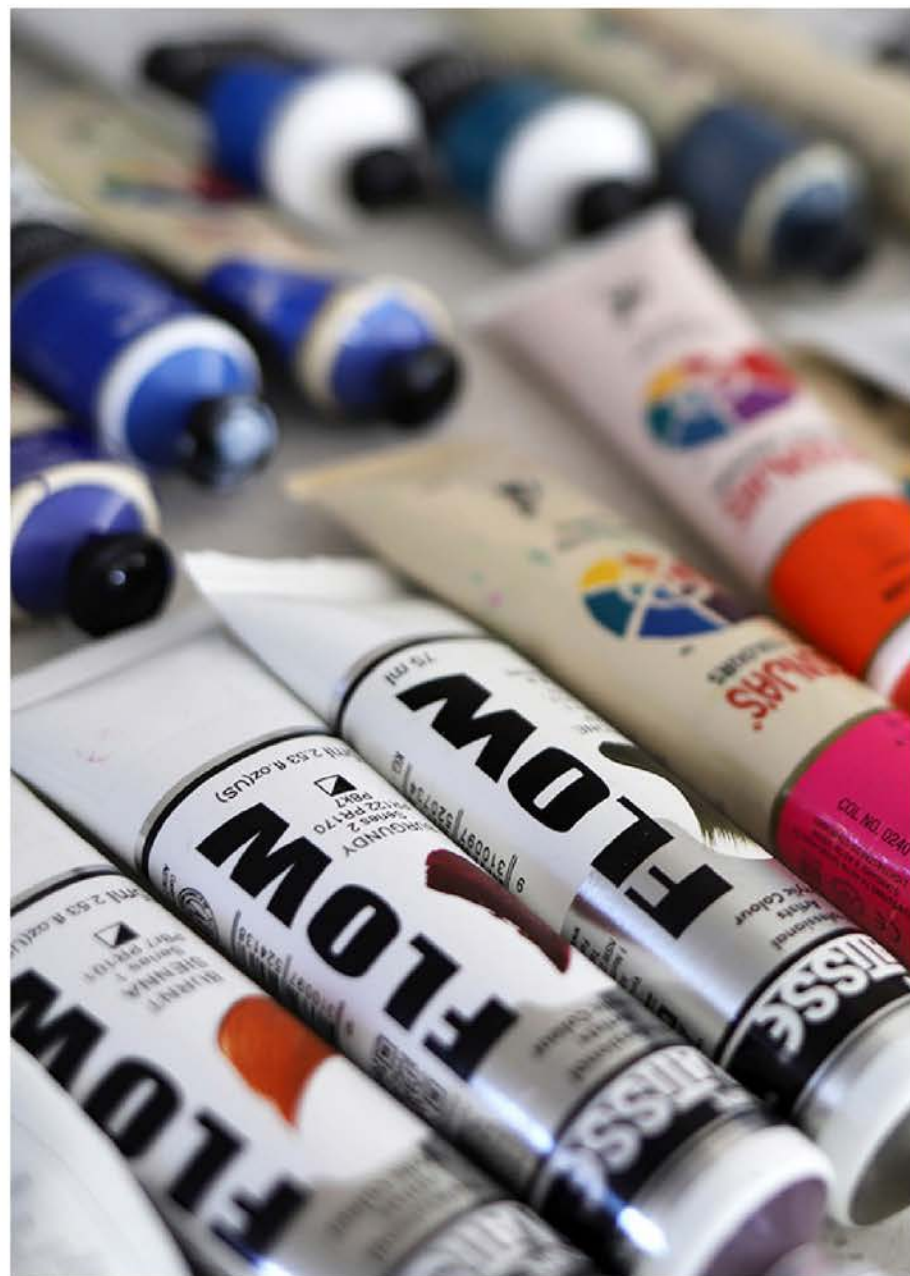
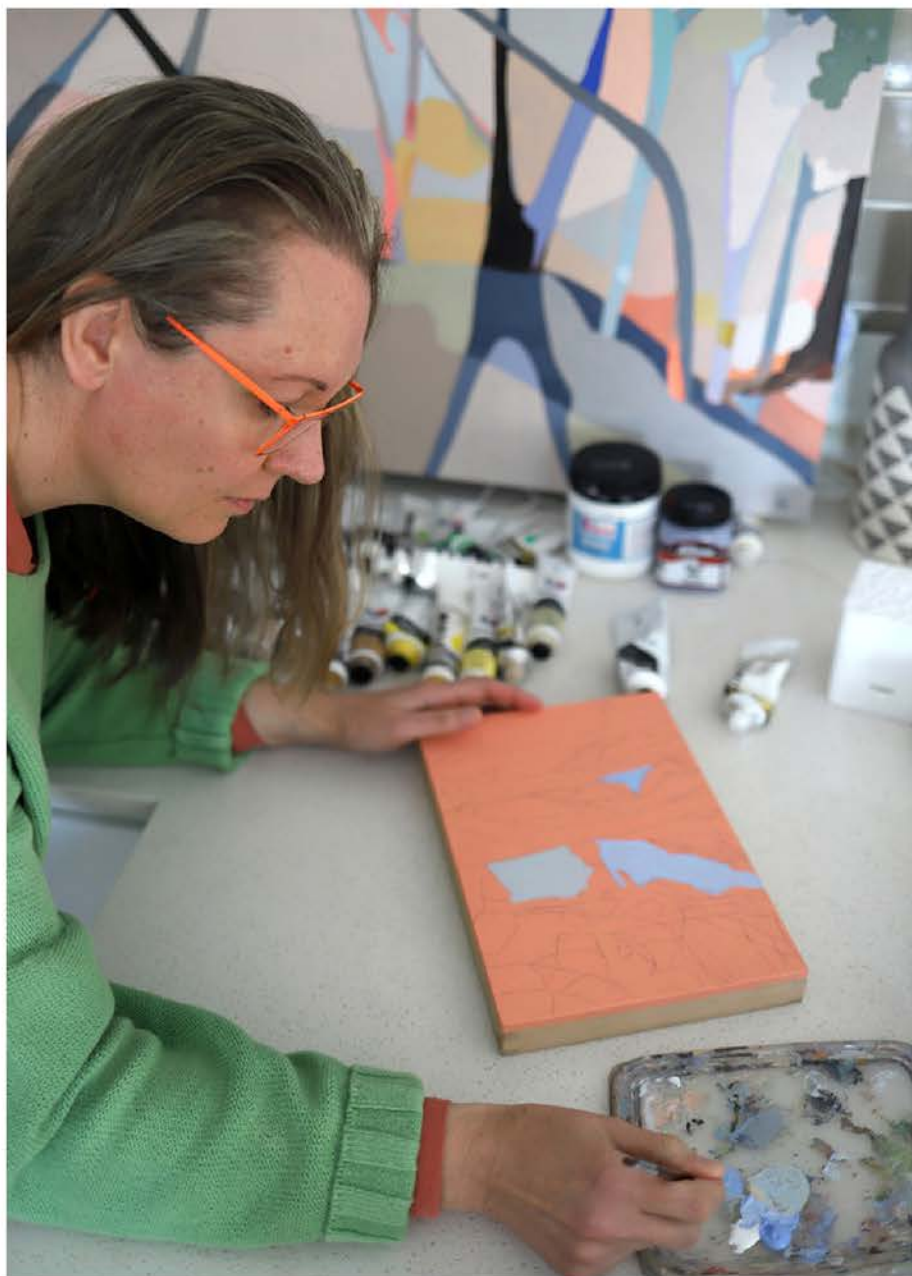
*Ana Anderson, Lagoon, 2022*

Acrylic on board, 43x52.5cm, framed in Oak

\$890



*Ana Anderson, Angophora In The Grove, 2022*  
Acrylic on board, 43.5x53.5cm, framed in Oak  
\$890





*Ana Anderson, Ghost Gum, 2022*

Acrylic on board, 43.5x53.5cm, framed in Oak

\$890



*Ana Anderson, The Outlook, 2022*

Acrylic on board, 43.5x53.5cm, framed in Oak

\$890





*Ana Anderson, Bush Gully Blue, 2022*  
Acrylic on board, 48.5x63.5cm, framed in Oak  
\$950





*Ana Anderson, Beyond The Trees, 2022*  
Acrylic on board, 52.5x62.5cm, framed in Oak  
\$990



*Ana Anderson, Taylor's Point, 2022*  
Acrylic on board, 63x53cm, framed in Oak  
\$990

*Ana Anderson, Hunter's Moon, 2022*  
Acrylic on board, 62.5x52.5cm, framed in Oak  
\$990





*Ana Anderson, Morning Mist, 2022*

Acrylic on linen, 121x60cm, unframed on deep edge canvas

\$1950

Ana Anderson  
The Corner Store Gallery

382 Summer Street Orange NSW 2800

[www.cornerstoregallery.com](http://www.cornerstoregallery.com)

