

THE CORNER STORE  
GALLERY

THIS PLACE: A GROUP EXHIBITION

Daniela Cristallo



# **This Place: A Group Exhibition**

Five female artists from across Australia respond to the landscape

November 18<sup>th</sup> – 28<sup>th</sup> 2020

Pre-sales launch online November 17<sup>th</sup> 8pm

Abstract artists Daniela Cristallo, Fleur Stevenson, Jackie Anderson, Liz Wickramasinghe and Madeline Young have each created a series of works that celebrate a specific place or landscape. While these artists all have very different styles, this exhibition will bring them all together in a beautiful abstract landscape exhibition.

## **Daniela Cristallo**

As an abstract painter I use the landscape to gather imagery, it is a constant reference point to my work, I want to convey an intimate subjectivity that emotionally evokes a sense of place and captures the spirit en plein air. My work explores the language of colour, texture, mark and mood of remembered landscapes from studies of places I have been to and the feelings it leaves me with.

Through my travels into Mutawintji Country, Fowlers Gap outback NSW, comes this new body of work which responds to the deep memories of ancient ochre cliffs, reflective waterholes, flat spindly open spaces and dry river beds. 'This Place' is vast, arid and diversely stunning and my paintings draw upon its natural forms not to imitate but connect in a more inventive way to the raw wilderness of desert Australia.

**Daniela Cristallo**

*Above the River Bed*, 2020

Acrylic on board

52x41cm

Framed in Tasmanian oak

\$910



**Daniela Cristallo**

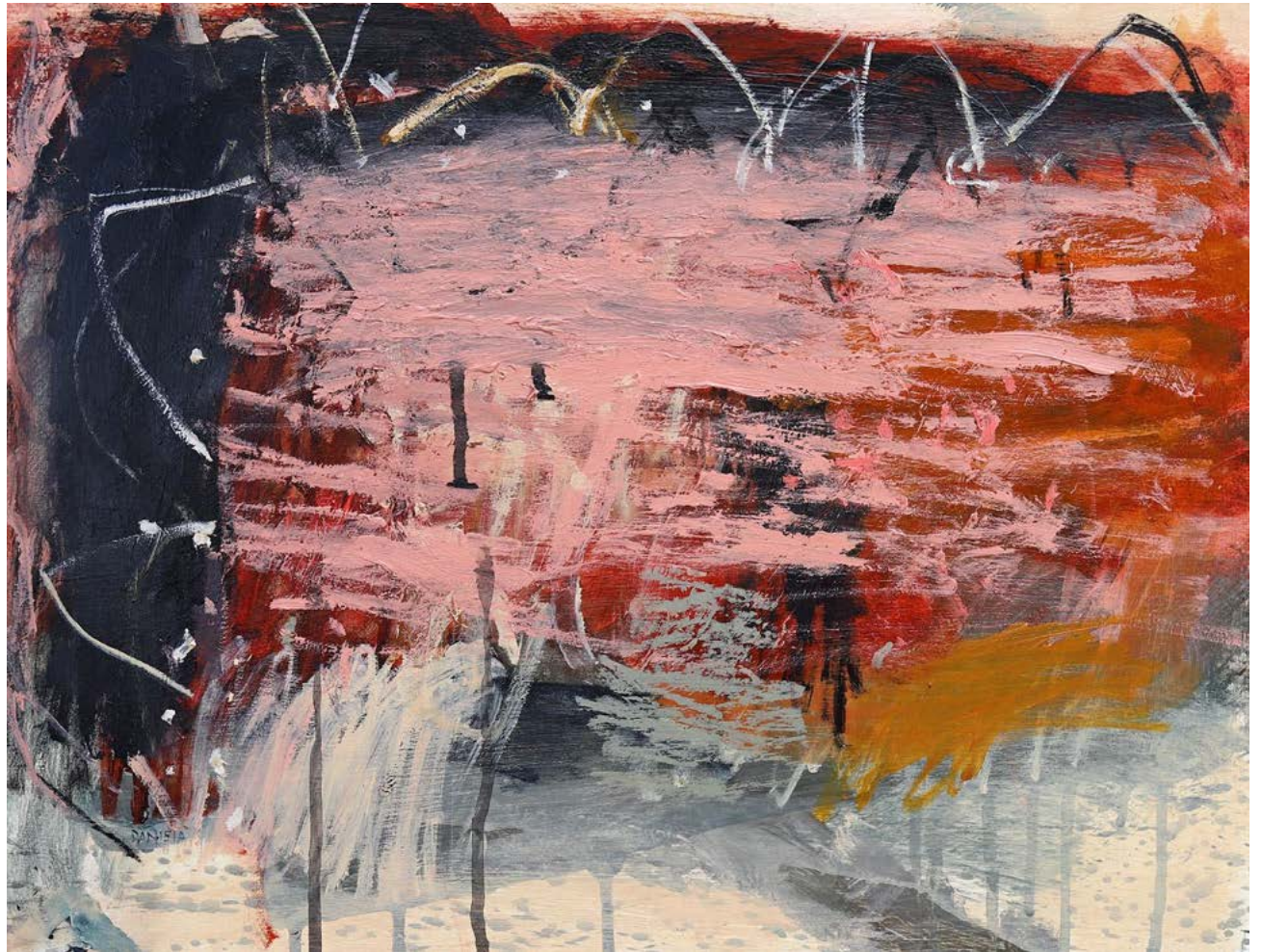
*Desert Storm*, 2020

Acrylic on board

52x41cm

Framed in Tasmanian oak

\$910



**Daniela Cristallo**

*Ochre Creek*, 2020

Acrylic on canvas

64x64cm

Framed in Tasmanian oak

\$1300



**Daniela Cristallo**

*Dry Creek Wandering, 2020*

Acrylic on canvas

79x79cm

Framed in Tasmanian oak

\$1900



**Daniela Cristallo**

*Dry Creek Wandering*, 2020

Acrylic on canvas

79x79cm

Framed in Tasmanian oak

\$1900



THE CORNER STORE  
GALLERY





**Daniela Cristallo is one of our favourite artists here at The Corner Store Gallery and we were thrilled when she agreed to be part of our upcoming group exhibition THIS PLACE .**

**How did you become involved with The Corner Store Gallery?**

*In 2019 I submitted work into the 'Landscape Group Exhibition' and was accepted to hang in this beautiful gallery which I was over the moon about. I then entered three works into 'Mini Series Art Prize' and have just continued entering my works into any group show or prize this gallery has to offer. I particularly love making trips out to the Corner Store Gallery in Orange for opening nights, always a real buzz!*

**Tell us about your practice?**

*I love spending time outdoors and am super passionate about the Australian landscape, any opportunity I get to be en plein air with my gals i'm there packing the car and heading off to new and varied locations. My practice is inspired by this rich land, its integral to my work and my place in it. Through my many drawings and studies in mixed media on paper, I allow this to weave its way back into the studio in more abstracted ways. I find the strong elemental forces of nature have the most lasting impressions. On many occasions I revisit a place, it really deepens my connection and gives me new ways of seeing the land in more exciting and open ways.*

**How long have you been making art?**

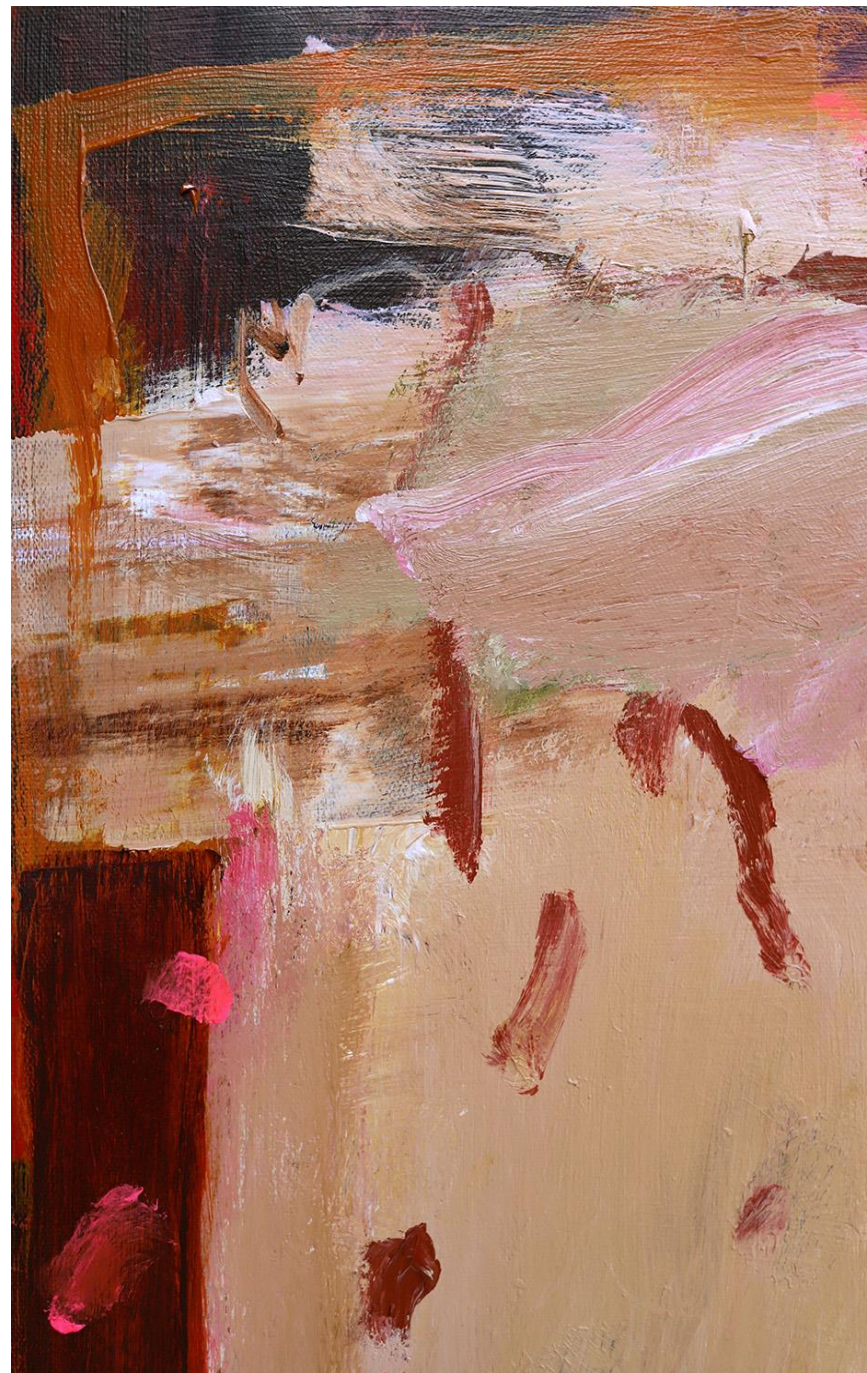
*I studied art when I left school and created on and off as life and growing up took over for a while. It's only now in the last two years I have really committed myself to my artistic practice which has been a real turning point!*

**Where do you create your art?**

*En plein air and in my Inner West studio, Sydney. My studio is attached to my home so lucky for me I can create art 24/7 if I choose.*

**Tell us about the body of work you've created for THIS PLACE. Why have you chosen this particular place?**

*This series of works comes from my magnificent field trip out to Fowlers Gap, arid zone research station outback NSW, 112km north of Broken Hill. The importance for me to explore this barren landscape was more of a longing as it had such a strong and deep impact on me. It is unlike anything I have experienced before, so wild and free in a very unearthing way.*



# THE CORNER STORE

---

# GALLERY

EXHIBITIONS | POPUPS | WORKSHOPS

The Corner Store Gallery was established in 2014 and has been providing artists and designers from all over Australia with a beautiful space to showcase their work and ideas for over 6 years.

We are a small, independently run space located in the thriving regional community of Orange in NSW. We exhibit a diverse range of emerging and well-established artists specialising in a great variety of mediums. We also hold workshops exploring a wide range of mediums and materials on a regular basis.

**382 Summer Street Orange NSW**

**[www.cornerstoregallery.com](http://www.cornerstoregallery.com)**

**[cornerstoregallery@outlook.com](mailto:cornerstoregallery@outlook.com)**

**0448 246 209**